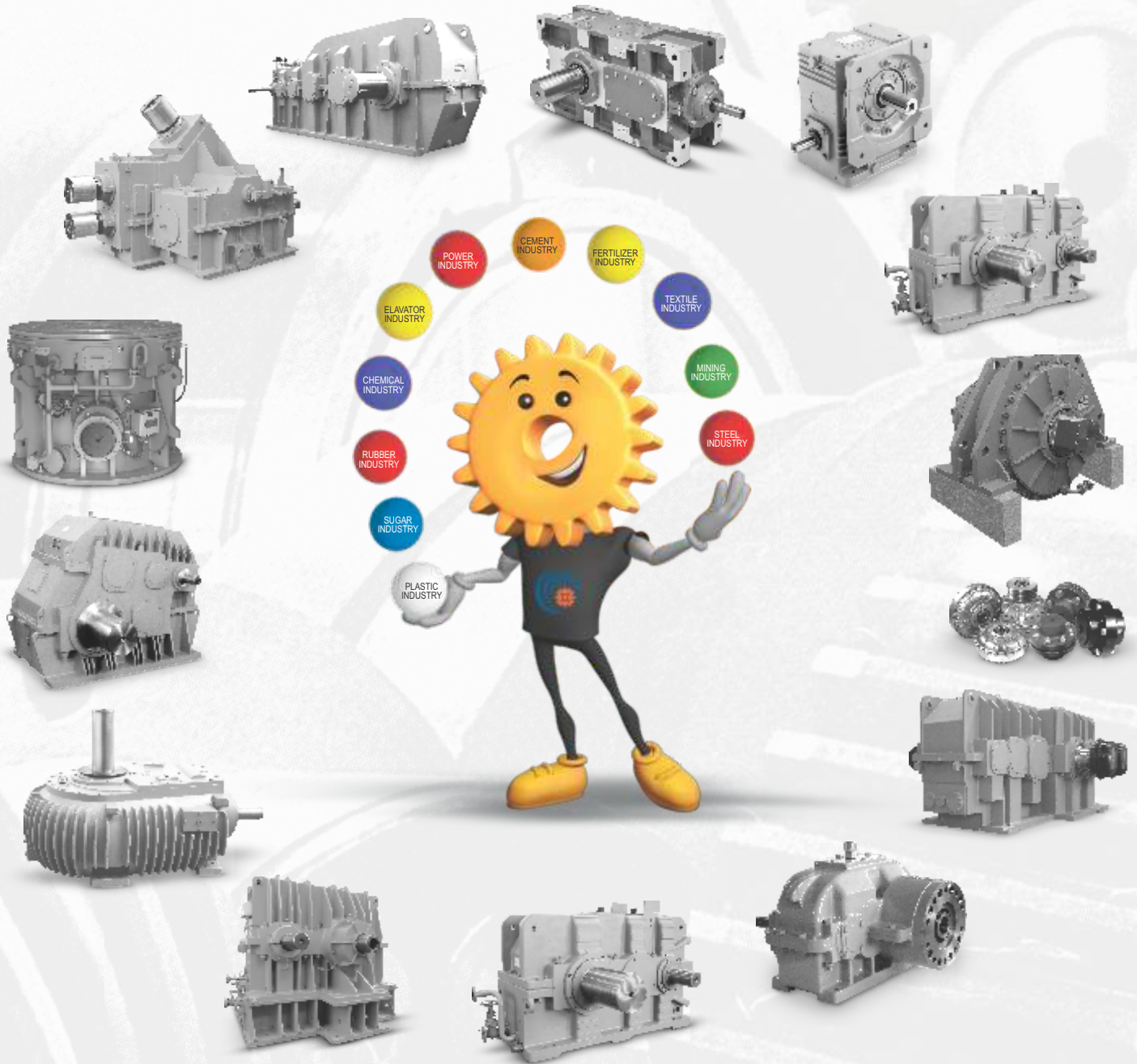


ELECON RANGE OF TRANSMISSION PRODUCTS



radicon 
An Elecon Group Company

 **ELECON**
GEARING THE FUTURE

benzlers 
An Elecon Group Company

Panoramic view of Bhanubhai Memorial Centre of Excellence (BMCE)



BHANUBHAI MEMORIAL CENTRE OF EXCELLENCE (BMCE)

We have built a new state-of-the-art manufacturing plant as our attempt to move towards evolution. This modern engineering plant has been built to double the gear box manufacturing capacity to provide world class quality and to ensure on-time delivery.

In last seven decades, we have done lots of research and innovations in gear technology. We have developed variety of products in transmission business from worm gear to helical, from planetary to vertical planetary, variable speed couplings, etc. This development always demanded overall progress in gear manufacturing technology, right from cutting to carburizing, gear grinding. The extract of learning is used in layout, machine selection as well in process improvement of gear manufacturing. The new plant will produce internal components of the helical gear box and has a capacity of manufacturing 1000 gear boxes per month.

This new plant is a tribute to our founder Chairman Lt. SHRI BHANUBHAI PATEL who wanted to remain "ALWAYS A STEP AHEAD IN TECHNOLOGY."

In the year 1951, Elecon set out on its maiden journey to attain new heights of technical excellence and knowhow, creating landmarks, from Elevators and Conveyors, to high quality Gearboxes and Material Handling Equipment.

Elecon set up an independent Gear Division in the year 1976, also known for pioneering in India. The first to introduce modular design concept, case-hardened and ground gear technology in India. These path-breaking efforts backed by full-fledged departments employing a strong, skilled work force. It has supplied hi-tech equipment to major core sectors such as Fertilizers, Cement, Coal and Lignite mining, Power, Textile, Plastic, Steel and Port Mechanization in India and abroad.

MODERN INFRASTRUCTURE

Elecon designs and manufactures a comprehensive range of worm, parallel shaft, right angle shaft helical and spiral bevel helical gears with horizontal and vertical output shafts in various sizes, from single to quadruple stage reduction. These gears are compact and light, save space, reducing foundation structure costs and other expendables.

Elecon Gear Division is acknowledged as the most modern in the industry, deploying the latest technological innovations. All of Elecon's machinery is Computer Controlled (CNC) ensuring high degree of precision on manufacturing, design and quality testing of gear components to DIN / AGMA international specifications.

Elecon also inaugurated "**Bhanubhai Memorial Center of Excellence (BMCE)**" - an ultramodern, purpose-built facility for manufacturing standard helical and bevel-helical gears with a higher volume of production and greater accuracy, utilizing the latest in manufacturing innovations, creating a benchmark in the industry.

Elecon has unmatched expertise in providing Custom-made Gearboxes for Steel Mills, High Speed Turbine, Sugar Mills, Marine Applications, Plastic Extrusions, Cement Mills, Rubber Mills, Hydro Turbine, Windmill Gearboxes and many more.

It is made possible through highly on-line computerized system of advanced Planning and Scheduling softwares, Elecon is prepared to deliver within timelines.

CUSTOMER SATISFACTION

ELECON – Gear Division has achieved ISO 9001 in November 1994 for quality management system.

Achieved IMS ISO 9001:2015, ISO 14001:2015 & OHSAS: 2007 certification in Jan 2018! It means our customers have complete assurance that ELECON operates to the highest quality standards and that all regulatory requirements are met for our products and services while we continually strive to maintain and improve these standards that set us apart.

Customer satisfaction has always been a fundamental part of our business but implementing IMS (Integrated Management System) standards ensures we identify all present customer needs and identify and assess future requirements. It also helps us to measure client satisfaction and enables us to continually improve our processes.

An Integrated Management System can benefit our organization through increased efficiency and effectiveness, and cost reductions while minimizing the disruption caused by several external audits. It also shows our commitment to increased performance, employee and customer satisfaction, and continuous improvement.

NEW GENERATION TECHNOLOGY

Elecon recently introduced EON/EOS series Industrial Gearboxes for all standard applications. This new series features a variety of enhancements such as higher torque ratings, better thermal characteristics, universal mounting options and multiple accessories to enable adaptation to the most stringent requirements

Elecon now provides spiral bevel skiving (hard cutting) technology and infrastructure to make spiral bevel pairs up to 1100 diameter.

Super NU Series supplied with factory, 'Fill and Forget' concept using Synthetic long life lubrication, increased Power Transmitting Capacity in sizes 1.5/8", 1.3/4", 2.1/4" and 3".....

Worm gear unit range sizes upto 17" has now been extended to 28" in closed worm gearbox and worm pair upto 54".



Bird eye view of Elecon Gear Division



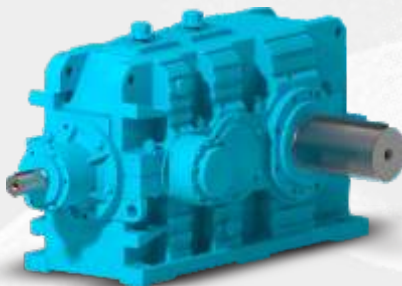
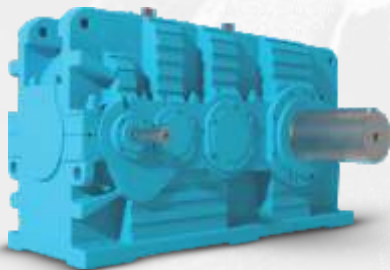
1. ELECON EON² HELICAL/BEVEL HELICAL GEAR UNIT

Ratio : 1.25:1.....450:1
Torque : Up to 115 kNm



3. ELECON CRANE DUTY HELICAL GEAR UNIT

Ratio : 12.5:1.....280:1
Torque : Up to 305 kNm



2. EXTENDED EON HIGHER SERIES HELICAL AND BEVEL HELICAL GEAR UNIT

Ratio : 2:1.....400:1
Torque : 140 kNm....1400kNm

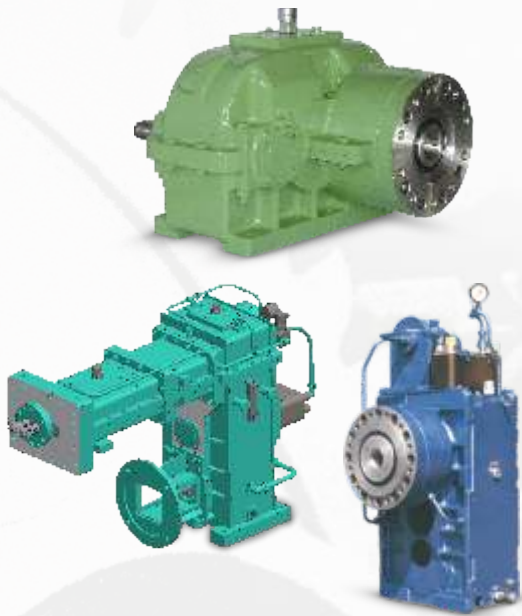
Bevel Helical Gear Units

Ratio : 5:1.....355:1
Torque : 140 kNm....1400kNm



4. ELECON - DUAL TANDEM GEAR UNIT FOR HIGH OUTPUT TORQUE.

Ratio : 45:1.....250:1
Torque : Up to 2070 kNm



5. ELECON - EXTRUDER GEAR UNITS.

(A) Elecon : Single Screw Extruder
Gear Units.
Ratio : 4:1.....160:1
Torque : 3.....315 kNm

(B) Elecon : Twin Series Extruder
GearBox.
Size : ETS-250
Ratio : 28:1
Torque Per
Screw : 2.1 kNm
Screw Centre
Distance : 55.5 mm



6. ELECON - VRM (VERTICAL ROLLER MILL DRIVE) FOR CEMENT & POWER

(A) Bevel Helical Gear
Ratio : 16:1.....50:1
Torque : Up to 2500 kNm

(B) Bevel Planetary Gear Box B1PV
Ratio : 16:1.....50:1
Torque : Up to 1040 kNm

(C) Bevel Planetary Gear Box B2PV
Ratio : 30:1.....50:1
Torque : Up to 2500 kNm



7. ELECON - HEAVY DUTY PLANETARY GEARBOX FOR SUGAR MILL DIRECT DRIVE

Ratio : 63:1.....500:1
Torque : Up to 8000 kNm



8. ELECON - HIGH SPEED GEARBOX

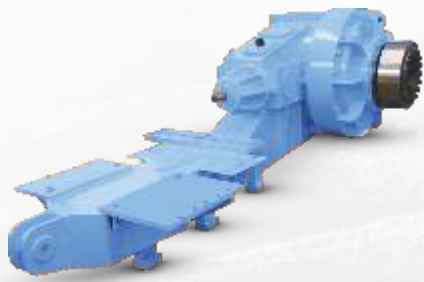
Prime mover power : Up to 50MW
Input Speed : Up to 14000 rpm



9. ELECON - PLANETARY GEARBOX FOR SLEWING DRIVE OF STACKER/ RECLAIMER.

Ratio : 100:1.....3500:1
Torque : Up to 120 kNm





10. ELECON - PLANETARY GEAR FOR BUCKET WHEEL DRIVE OF STACKER/RECLAIMER WITH INTEGRAL MOTOR BASE FRAME.

Ratio : 140:1.....400:1

Torque : Up to 800 kNm



11. ELECON - ET SERIES SPIRAL BEVEL CUM HELICAL GEARBOX WITH VERTICALLY UPWARD OUTPUT SHAFT FOR COOLING TOWER APPLICATION.

Ratio : 8:1.....16:1

Torque : 80 kNm



12. ELECON - WIND MILL GEARBOX FOR POWER GENERATION.

(A) Ratio : 1/25.....1/60

Power : 2 MW

(B) Ratio : 1/40.....1/120

Power : 660 kW



13. ELECON - MARINE REDUCTION GEARBOX for FPP & CPP Drive.

Ratio : 1.6.....7.1

Power : 10000 kW

WORM



14. UNDER DRIVEN (SNU-U), OVER DRIVEN (SNU-O)

Factory filled synthetic lubricant (user has not to fill any grade of oil).

Size (Inch) : 1 5/8, 1 3/4, 2, 2 1/4, 3 & 3.54

Ratio : 5:1.....70:1

Torque : Up to 4.62 kNm

Without Factory filled lubricant

Size (Inch) : 4, 5, 6, 7, 8, 9 & 10.5

Ratio : 5:1.....70:1

Torque : Up to 8.5 kNm

(*ERU/ERV Size 4,5,6,7,8)



15. (A) VERTICAL OUTPUT SHAFT
UP/DOWN (SNU-V)

(B) HOLLOW OUTPUT SHAFT
(SNU-SM)

Modular universal mounting super
NU series worm gear units

Factory filled synthetic lubricant
(user has not to fill any grade of oil).

Size (Inch) : 1 5/8, 1 3/4, 2,
2 1/4, 3 & 3.54

Ratio : 5:1.....70:1

Torque : Up to 4.62 kNm

Without Factory filled lubricant

Size (Inch) : 4, 5, 6, 7, 8, 9 & 10.5

Ratio : 5:1.....70:1

Torque : Up to 8.5 kNm

(*ERV Size 4,5,6,7,8)



16. VERTICAL OUTPUT SHAFT
UP/DOWN (ERV, SFV)
HOLLOW OUTPUT SHAFT (SSM)

HEAVY DUTY SPLIT HOUSING
WORM GEAR UNITS.

Size (Inch) : 10, 12, 14 & 17

Ratio : 5:1.....70:1

Torque : Up to 27.4 kNm



17. UNDER DRIVEN (ERU,SFU),
OVER DRIVEN (ERO,SFO)

Size (Inch) : 10,12,14,17

Ratio : 5:1.....70:1

Torque : Up to 27.4 kNm



18. WORM TUBE MILL GEARBOX (SFUO)

Size (Inch) : 3.....14

Ratio : 5:1.....70:1

Torque : Up to 15.04 kNm



19. COOLING TOWER FAN DRIVE GEAR UNIT.

Cooling Tower Fan Drive Gear Unit
incorporates an extended top bearing
housing to accommodate the larger
wheel shaft bearing.

- SNU - CTU

Size (Inch) : 4, 5, 6, 7, 8, 9 & 10.5

- CTU

Size (Inch) : 12, 14 & 17

Ratio : 5:1.....70:1

Power : 5.....350 kW

Torque : Up to 27.4 kNm



20. DOUBLE REDUCTION.

(WORM - WORM)

- Under Driven (SNU - UD)
- Over Driven (SNU - OD)
- Vertical Output Shaft up/down (SNU-VD)
- Hollow Output Shaft (SNU-SMD)

Size (Inch) : 1 3/4/30, 2 1/4/40, 2 1/4/50, 3/60, 3/70, 4/80, 4/90 & 5/105

Ratio : 75:1.....4900:1

Torque : Up to 9.295 kNm

- Under Driven (SFUD)
- Over Driven (SFOD)
- Vertical Output Shaft up/down (SFVD)
- Hollow Output Shaft (SSMD)

Size (Inch) : 5/120, 6/140 & 7/170

Ratio : 75:1.....4900:1

Torque : Up to 42 kNm

DOUBLE REDUCTION
(HELICAL - WORM)

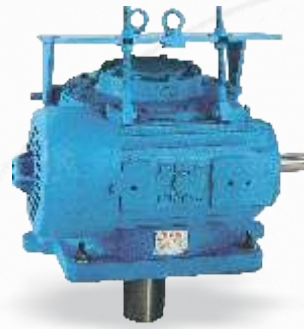
Combination with first pair helical gear unit and second pair with worm gear unit.

- Under Driven (HSFU)
- Over Driven (HSFO)
- Vertical output shaft up/down (HSFV)
- Hollow output shaft (HSSM).

Size (Inch) : 7, 8, 9, 10, 10.5, 12,14,17

Ratio : 315 max.

Torque : Up to 34.4 kNm



21. HEAVY DUTY STIRRER UNITS.

Heavy Duty stirrer unit incorporates as extended bearing housing to accommodate a larger bottom bearing and increased shaft size, absorb high bending load during stirrer application. Facility for mounting motor on top.

- SNU - CVDM

Size (Inch) : 4, 5, 6, 7, 8, 9 & 10.5

- CVDM

Size (Inch) : 12,14

Ratio : 5:1.....70:1

Power : 5.....350 kW

Torque : Up to 27.4 kNm

COUPLINGS



22. FLUID COUPLING

Size : 185.....870

Power : 0.20.....1000 kW

Available with flexible coupling unit, brakedrum & pulley (motor/ machine) mounting.



23. ELIGN GEARED COUPLING

Sizes : 130....110000

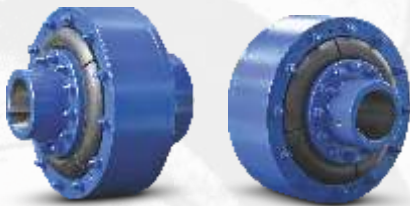
Power : 0.136 kW/rpm....115.19 kW/rpm

Torque : 1.3 kNm....1100 kNm



24. ELFLEX - FLEXIBLE COUPLING

Sizes : (A) EFC-01.....EFC-17
 (B) FC 630.....FC 1600
 Power : 0.007 kW/rpm.....44.77
 kW/rpm
 Torque : .070 kNm.....430 kNm



25. HIGHLY - FLEXIBLE COUPLING

Sizes : HFC-270.....970
 (9 Sizes)
 Torque : 1.65 kNm.....89.5 kNm



26. SCOOP CONTROLLED-VARIABLE SPEED FLUID COUPLING

Size : ESC-480.....ESC-1030
 Power : 20.....2320 kW

LOOSE GEARS



27. SPIRAL BEVEL GEAR - HARD CUT

Wheel Dia. : Up to 1100 mm
 Module : Up to 14 mm



28. HELICAL/SPUR GEAR WHEEL

Dia. : Up to 3000 mm
 Width : Up to 600 mm
 Module : Up to 32 mm



29. DOUBLE HELICAL GEAR WHEEL

Dia. : Up to 3000 mm
 Width : Up to 600 mm
 (Up to 800 mm with gap)
 Module : Up to 32 mm



30. INTERNAL GEAR / ANNULUS

Dia. : Up to 3000 mm
 Width : Up to 550 mm
 Module : Up to 32 mm



31. LARGE WORM PAIR.

(A) Small & Medium Size : up to 17"
 (B) Special Size: 27" to 41" Worm pair for Coal pulverized mill of Coal fired Thermal Power Station.

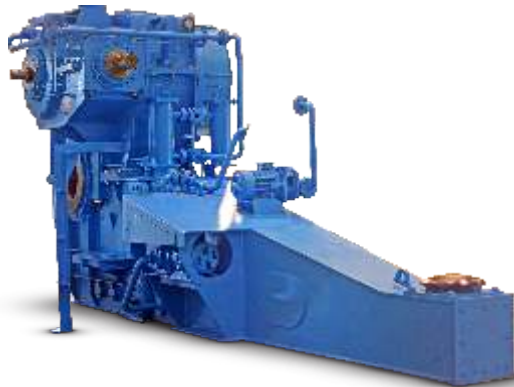


32. PINION SHAFT

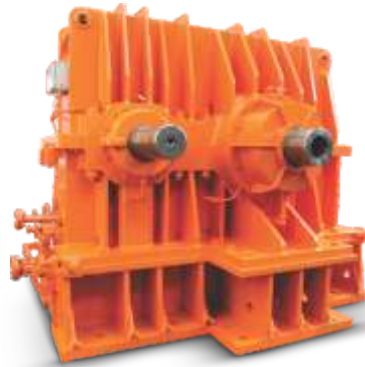
Dia. : Up to 1000 mm
 Length : Up to 2800 mm
 Module : Up to 32 mm

RANGE OF PRODUCTS

ELECON SPECIAL GEARS



Bucket Wheel Excavator Drive GearBox



Hydel GearBox



Rubber Mixer Drive GearBox



PQF Mill Drive Vertical GearBox



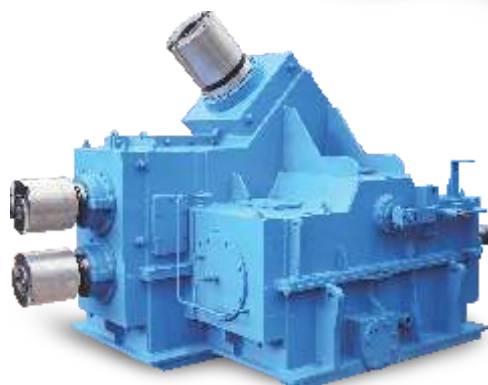
Complete Drive Solution



Vertical Pinion Stand GearBox



18 Output Shaft GearBox for SRM



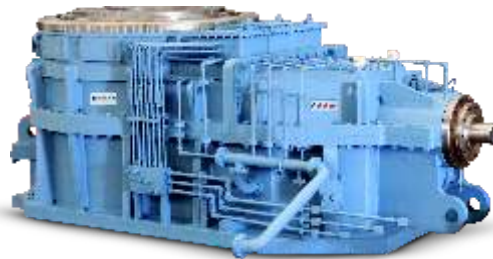
Pinion Stand GearBox

RANGE OF PRODUCTS

ELECON SPECIAL GEARS



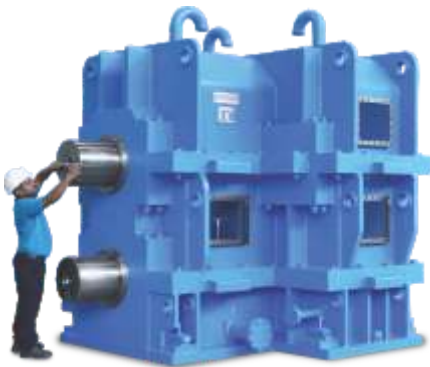
Roller Press GearBox



Vertical Roller Mill Drive GearBox



Marine Application



Blooming Mill GearBox



Worm GearBox Upto 28"



Inline Planetary GearBox (Central Drive)



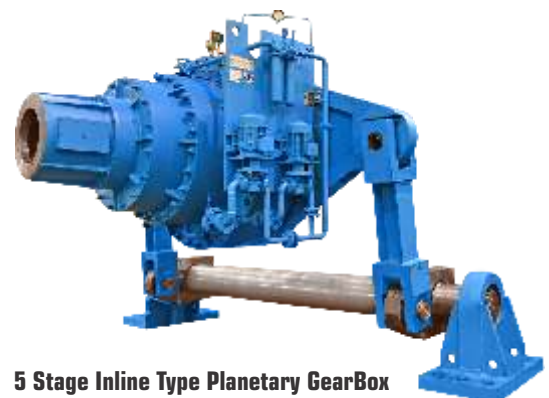
Laddell Crane Main Hoist Drive



Agitator Drive



Main Slew GearBox

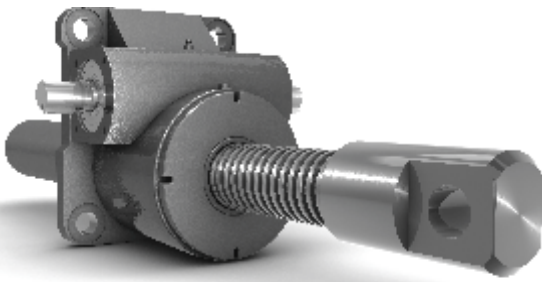


5 Stage Inline Type Planetary GearBox

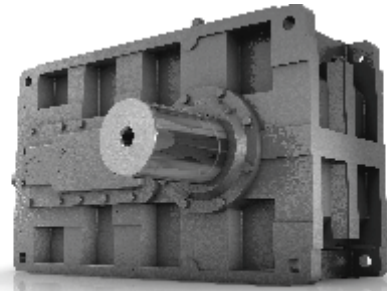
Benzlers and Radicon have over 60 years of experience and have a reputation for being market leaders in the design and manufacture of screw jacks, shaft mounted gearboxes and industrial reducers. The company comprises of 4 business units: UK based Radicon, Sweden & Europe based Benzlers and Thailand based Radicon.

Both Benzlers and Radicon sell product across the world and are differentiated from the competition through an engineered solutions led approach and high levels of customer service.

Industrial Reducers | Geared Motors | Screw Jacks | Couplings | Geared Pumps | Worm Gears



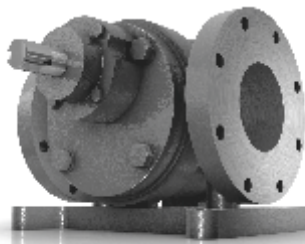
BD Screw Jack



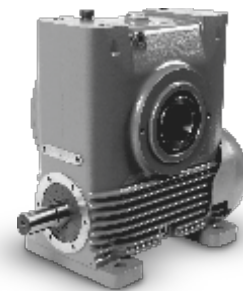
Benzlers - Series G Industrial Reducer



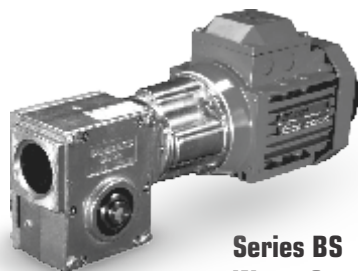
Series J
For excellence - For safety



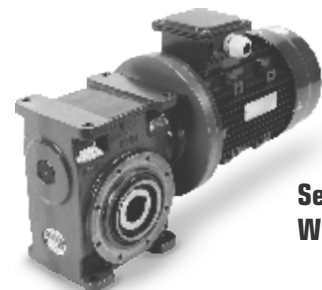
Roloid Gear Pump



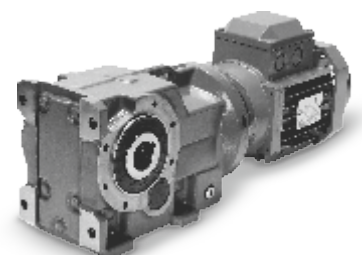
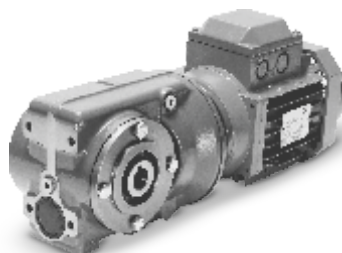
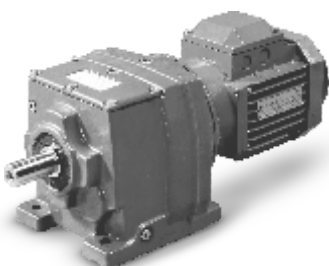
Series AM Worm Gear



Series BS Worm Gear



Series AJ Worm Gear



Series M, C, F and K Geared Motors For availability - For performance

REPAIR & REFURBISHMENT SOLUTION FOR INDUSTRIAL & WINDMILL GEARS

As received...



As received...



As received...



Before & After

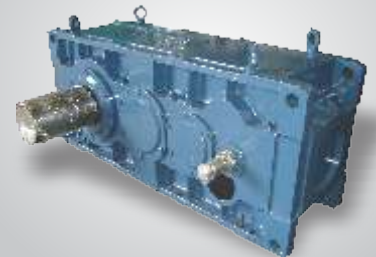
After service...



After service...



After service...



About ELECON SERVICES at CENTERS

- Walk in with your ailing gearbox and walk away with completely refurbished gearbox.
- Refurbished to near original (with latest advancements) for desired gearbox performance.
- Each and every component of your gearbox is scanned under our state of the art testing facilities for materials (in NABL approved labs), tooth geometry/profile, etc.
- Thorough analysis of failures with comprehensive and appropriate solutions by our experienced team of Design, Manufacturing, Quality and Service engineers.
- The most effective way of restoring the health of your Gear drives
- Gearbox Re-engineering and development for any applications.

ELECON SERVICES are equipped with following facilities.

- EOT Crane with 20T/10T/5T capacity
- Hydraulic Power Press – 300 Ton capacity
- Heavy Duty Lathe
- Radial Drilling Machine
- Induction Heaters
- Cleaning tank
- Oil heating tank
- Air Compressor
- Test Bed with Motor & Variable speed Drive for No-Load trial run of Gearboxes

OVERHAULING OF GEARBOXES AT REFURBISHMENT CENTERS

- ✓ Dismantling of Gearboxes
- ✓ Root Cause Analysis of damages – Identification of damaged and/or worn-out parts
- ✓ Replacement of defective parts, reassembly, trial run, etc.
- ✓ Restoring to original (or better) performance
- ✓ Up-gradation/Modification of existing gearboxes for improved performances
- ✓ No-Load test run with required test reports
- ✓ Painting

ON-SITE SERVICE SUPPORT

- ✓ Pre- inspection at site of existing drives
- ✓ Assessment and preparation of pre-inspection report
- ✓ Collection of operating data for analysis
- ✓ Availability of spares and requirements.

INFRASTRUCTURE



PANORAMIC VIEW OF BHANUBHAI MEMORIAL CENTRE OF EXCELLENCE (BMCE)

WORLD'S MOST TECHNOLOGICALLY ADVANCED GEAR MANUFACTURING FACILITY



NATIONAL NETWORK



 MANUFACTURING FACILITIES

 SALES OFFICE

AHMEDABAD

Tel: +91-79-26406683
Email: infogear@elecon.com

ASANSOL

Tel: +91-2692-238 702 / 238 701 / 236 469
Email: infogear@elecon.com

BANGALORE

Tel: +91-80-25250219/25251834
Email: infogear@elecon.com

BILASPUR

Tel: +91-2692-238 702 / 238 701 / 236 469
Email: infogear@elecon.com

CHENNAI

Tel: +91-44-24349237/24349521
Email: infogear@elecon.com

DHANBAD

Tel: +91-2692-238 702 / 238 701 / 236 469
Email: infogear@elecon.com

HYDRABAD

Tel: +91-2692-238 702 / 238 701 / 236 469
Email: infogear@elecon.com

KOLKATA

Tel: +91-33-2476 1861
Email: infogear@elecon.com

MUMBAI

Tel: +91-2692-238 702 / 238 701 / 236 469
Email: infogear@elecon.com

NAGPUR

Tel: +91-2692-238 702 / 238 701 / 236 469
Email: infogear@elecon.com

NEW DELHI

Tel: +91-2692-238 702 / 238 701 / 236 469
Email: infogear@elecon.com

PUNE

Tel: +91-2692-238 702 / 238 701 / 236 469
Email: infogear@elecon.com

RAIPUR

Tel: +91-2692-238 702 / 238 701 / 236 469
Email: infogear@elecon.com

SECUNDERABAD

Tel: +91-40-2784 6984/2784 5250
Email: infogear@elecon.com

VADODARA

Tel: 91-2692- 2692-238 702 / 238 701 / 236 469
Email: infogear@elecon.com

Repair and Refurbishment Center in India

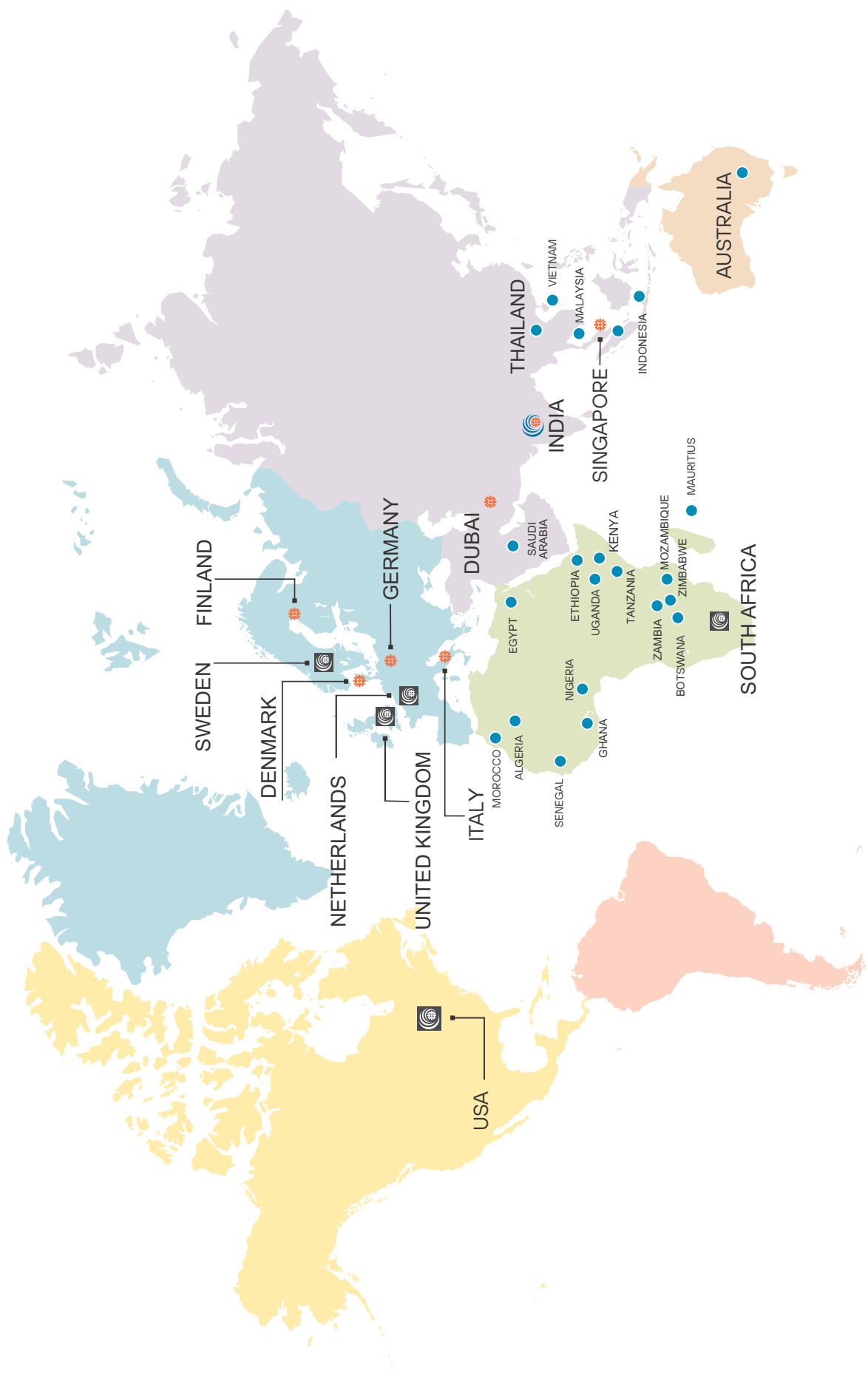
ELECON ENGG. CO. LTD

Refurbishment Center - Gear
Anand-Sojitra Road,
Vallabh Vidyanagar - 388 120 (Guj.)
Tel.: +91 2692 227544
Email: bkgajjar@elecon.com

ELECON ENGG. CO. LTD.

S.F.No.44/3, Madurai Road,
T Kunnathur Village, Peraiyur Taluk,
Madurai, Tamilnadu - 625708
Mo.: +91 99406 37009
Email: pramchandran@elecon.com

ELECON GROUP OF COMPANIES ACROSS GLOBE



ELECON GROUP OF COMPANIES ACROSS GLOBE

SOUTH EAST ASIA REGION

ELECON SINGAPORE PTE. LTD.

10 Anson Road, #10-11 International Plaza,
Singapore 079903
Ph.: +65-68759262
Email: salesap@elecon.com
Web: www.elecon.com

RADICON TRANSMISSION (THAILAND) LTD.

700/43 Moo 6 Amata City Chonburi
Industrial Estate, Tumbol Klomg Tum Ru,
Muang Chonburi 20000 Thailand
Ph :+66 38 459 044 Ext. 226
Email: salesap@radicon.com
Web: www.radicon.com

MIDDLE EAST & AFRICA REGION

ELECON MIDDLE EAST FZCO

Dubai Airport Free Zone,
POBox - 54754, Dubai, UAE
Ph.: +971 4 6091 424/5, +971 50 2755487,
+971-4-6091-426
Email: rajen@elecon.com
Web: www.elecon.com

ELECON RADICON AFRICA (PTY) LTD.

Office Suite 24,158 Jan Smuts Drive,
Rosebank, Johannesburg, 2196
Republic of South Africa.
Ph.: +27 63 980 5687, +27 11 486 2647
Email: satheesh@radicon.com
Web: www.elecon.com

PACIFIC REGION

RADICON TRANSMISSION (AUSTRALIA) PTY LTD.

SUITE 1 140 KEIRA STREET,
WOLLONGONG, NSW 2520
Email - salesausnz@radicon.com
Mobile: +61 0480 397 876

NORTH & SOUTH AMERICA REGION

RADICON DRIVE SYSTEMS INC

2475 Alft Lane
Elgin, IL 60124 USA
Ph.: +1 (888) MY-GEARS / +1 888 69-4327,
+1 (847) 593-9950
Email: info.us@radicon.com
Web: us.radicon.com

EUROPE REGION

RADICON TRANSMISSION UK LTD.

Unit J3, Lowfields Business Park
Lowfields Way Elland,
West Yorkshire HX5 9DA, United Kingdom
Ph.: + 44 1484 465 800, + 44 1484 465 801
Email: sales@radicon.com
Web: www.radicon.com

BENZLERS ITALIA SRL

Via Manzoni 52, 20089 Rozzano Milan,
Italy
Ph.: 39 028243511
Email: mail@benzlers.com
Web: https://www.benzlers.se/it/

OY BENZLER AB

Strömbergintie 8 D LH, 00380 Helsinki,
Finland
Ph.: +358 340 1716
Email: finland@benzlers.com
Web: https://www.benzlers.se/fi/

BENZLER TRANSMISSIONER A/S

Denmark
Ph.: +45 36 34 03 00
Email id: order@benzlers.com
Website : https://www.benzlers.se/dk/

BENZLER ANTRIEBSTECHNIK GMBH

Erna-Scheffer-Str. 2
40476 Düsseldorf, Germany
Tel: +800 3504000
Email: mail@benzlers.com
Web: www.benzlers.de

BENZLERS AB

Porfygatan 7
254 68 Helsingborg, Sweden
Ph.: +46 (0) 42 18 68 00
Email: order@benzlers.com
Web: www.benzlers.se/en

BENZLER-TBA BV

Jachthavenweg 2
5928 NT Venlo ,
The Netherlands
Tel: + 31 77 324 59 00
Email: mail@benzlers.com
Web: www.benzlers.nl

radicon 
An Elecon Group Company

 **ELECON**
GEARING THE FUTURE

benzlers 
An Elecon Group Company

INDIA

Manufactured by:

ELECON ENGINEERING CO. LTD.

Anand-Sojitra Road, Vallabh Vidyanagar - 388120, Gujarat, India.
Ph.: +91-2692-238 702 / 238 701 / 236 469 | Email: infogear@elecon.com | Web: www.elecon.com
CIN L29100GJ196OPLC001082