

# ELECON LOOSE GEARS







## WORLD'S MOST TECHNOLOGICALLY ADVANCED GEAR MANUFACTURING FACILITY

### BHANUBHAI MEMORIAL CENTRE OF EXCELLENCE (BMCE)

In the last six decades, Elecon have conducted intensive research in gear technology and manufacturing techniques. We have developed a variety of products in the transmission industry from worm gears to helical, from planetary to variable speed fluid couplings. This development has demanded a significant investment in manufacturing capability from gear cutting right through to heat treatment and profile grinding. This new plant has the capacity to manufacture sufficient helical gears to produce 1000 assembled gear units per month.

This plant is a tribute to our founding Chairman, Lt. Shri Bhanubhai Patel, who wanted to remain "Always a step ahead in technology"





Way back in 1951, Elecon set out on its journey to scale new heights of technical excellence, creating landmarks at every juncture, From elevators and conveyors, to high quality gears and material handling equipments. Elecon set up a separate Gear Division in the year 1976. Elecon is also known for its pioneering acts in India. The first to introduce modular design concept, case-hardened and ground gear technology in India. These path breaking efforts are backed by full fledged departments employing a strong, skilled work force. It has supplied hi-tech equipments to major core sectors such as fertilizer Plants, Cement Plants, Coal and Lignite Mines, Power Plants, Textile Plastic, Steel Plants and Port Mechanization in India and abroad.

## MODERN INFRASTRUCTURE

- Elecon designs & manufactures a wide range of worm, parallel shaft and right angle shaft helical and spiral bevel helical gears with horizontal and vertical output shafts in various sizes, from single to quadruple stage reduction. These gears are compact and light, Saving space, reducing foundation structure costs and lubricating oil consumption.
- Deploying modern technology – CAD / CAM in Engineering and Manufacturing on a continuous basis is the selling point of the company.
- Elecon Gear Division is acknowledged as the most modern in the industry. All of Elecon's machinery is computer controlled (CNC) ensuring high degree of precision on Manufacture, design and quality testing of gear components to DIN / AGMA international specifications.
- Elecon has recently inaugurated "Bhanubhai Memorial Center of Excellence (BMCE)" - an ultra-modern, purpose-built facility for manufacturing standard helical and bevel-helical gears with a higher volume of production and greater accuracy, utilizing the latest in manufacturing techniques .
- Elecon has unmatched expertise in providing customized gear boxes for Steel Mill, High Speed Turbine, Sugar Mill, Marine, Plastic Extrusions,

Cement Mills, Rubber mill, Hydro Turbine, Windmill gearboxes and many more.

- Elecon is prepared to deliver within deadlines. It is made possible through highly on-line computerised system of advanced Planning and Scheduling software.

## ISO 9001 – CUSTOMER SATISFACTION

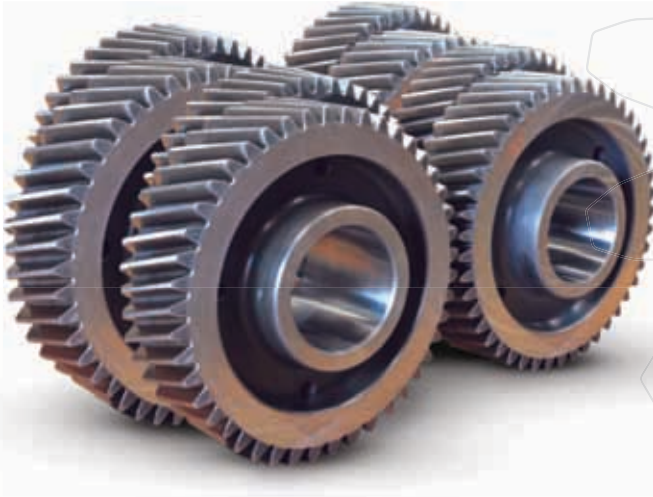
- In November 1994, Elecon gear quality management system achieved international recognition and at present we are ISO 9001-2008 Certified Company. Quality and service is part of Elecon's planned strategy to serve customers better.
- Inhouse heat treatment facilities for case carburizing and nitriding.
- NABL approved laboratory for physical and chemical testing of material.

## NEW GENERATION TECHNOLOGY

- Elecon has introduced EON/EOS series industrial gearboxes for all standard applications. This new series features a variety of enhancements such as higher torque ratings, better thermal characteristics, universal mounting options and multiple accessories to enable adaptation to the most stringent requirements.
- Elecon now provides spiral bevel skiving (hard cutting) technology and infrastructure to make spiral bevel pairs up to 1100 diameter.
- Super NU Series supplied with factory, 'Fill and Forget' concept using Synthetic long life lubrication, increased Power Transmitting Capacity in sizes 1.5/8", 1.3/4", 2.1/4" and 3".....



Bird eye view of Elecon Gear Division



## HELICAL/SPUR GEAR WHEEL

### Capacity

Dia.: Up to 3000 mm

Width: Up to 600 mm

Module: Up to 32 mm

Quality class: Up to DIN 4

## DOUBLE HELICAL GEAR WHEEL

### Capacity

Dia.: Up to 3000mm

Width: Up to 600 mm

Module: Up to 32 mm

Quality Class: Up to DIN 4



## PINION SHAFT

### Capacity

Dia.: Up to 1100 mm

Length: Up to 2800 mm

Module: Up to 32 mm

Quality Class: Up to DIN 4

## SPIRAL BEVEL GEAR - HARD CUT



### Capacity

Wheel Dia.: Up to 1100 mm

Module: Up to 14 mm

Quality Class: Up to DIN 5



## INTERNAL GEAR/ ANNULUS

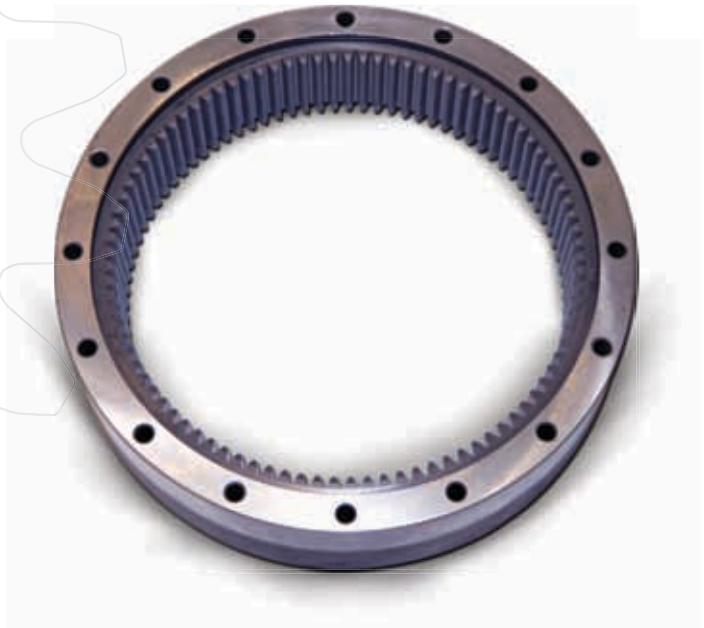
### Capacity

Dia.: Up to 3000 mm

Width: Up to 500 mm

Module: Up to 32 mm

Quality Class: Up to DIN 5



## WORM PAIR

### Capacity

Up to 17" Center Distance

## WORM PAIR FOR BALL MILL

### Capacity

20" to 54" Center Distance





**Gear Hobbing Machine**  
(Internal / External – 3000 mm Dia)



**Heat Treatment Process**



**Spiral Bevel 'Hard Cut' Machine (1100 mm Dia)**



**Profile Grinding Machine (Internal / External – 3000 mm Dia)**



**Gear Tooth Profile Grinding Machine**



## National Branches :

### AHMEDABAD

Tel: +91 79 26406683/26406684  
 Fax: +91 79 2640 1363  
 Email: salesahd@elecon.com

### ASANSOL

Tel: +91 341 2305901  
 Email: salesahd@elecon.com

### BANGALORE

Tel: +91-80-25250219/25252925  
 Fax: +91 80 2228 1834  
 Email: salesbgl@elecon.com

### BILASPUR

Tel: +91 07752 247723/247625  
 Fax: +91 7752 247720  
 Email: salesbil@elecon.com

### CHENNAI

Tel: +91 44 24349237/24349497  
 Fax: +91 44 2434 9643  
 Email: saleschn@elecon.com

### DHANBAD

Tel: +91 326 2230490  
 Email: saleschn@elecon.com

### HYDRABAD

Tel: +91 40 64561199  
 Email: salessec@elecon.com

### INDORE

Tel Fax: +91 731 257 6100  
 Email: salesindr@elecon.com

### KOLKATA

Tel: +91 33 2476 1861/2476 0904  
 Fax: +91 33 2476 1831  
 Email: saleskol@elecon.com

### MUMBAI

Tel: +91 22 22821315/22820725  
 Fax: +91 22 2287 0791  
 Email: salesbom@elecon.com

### NAGPUR

Tel: +91 712 6642600/6642 601  
 Email: salesnag@elecon.com

### NEW DELHI

Tel: +91 11 23414634/23414260  
 Fax: +91 11 2370 9046  
 Email: salesdel@elecon.com

### PUNE

Tel: +91 20 40191400  
 Email: salespune@elecon.com

### RAIPUR

Tel: +91 771 2259 321/23/24/30  
 Email: salesrai@elecon.com

### SECUNDERABAD

Tel: +91 40 2784 6984/2784 5250  
 Fax: +91 40 2784 8317  
 Email: salessec@elecon.com

### VADODARA

Tel: +91 265 2312972  
 Email: salesvad@elecon.com

## Service Center:

### ELECON ENGG. CO. LTD.

Plot No.77, GIDC Mithirohar,  
 Gandhidham, Kutch, Gujarat - 370 201  
 Mo.: +91 82003 42047  
 Email: drsuthar@elecon.com

### ELECON ENGG. CO. LTD.

S.F.No.44/3, Madurai Road,  
 T Kunnathur Village, Peraiyur Taluk,  
 Madurai, Tamilnadu - 625708  
 Mo.: +91 99406 37009  
 Email: pramchandran@elecon.com

## International Network:

### MIDDLE EAST :

#### ELECON MIDDLE EAST FZCO, Dubai

Phone : +97 146 091 424, +97 146 091 425  
 Fax : +97 146 091 426  
 E-mail : salesme@elecon.com

### FAR EAST :

#### ELECON SINGAPORE PTE. LTD.

Phone : +65 622 782 58  
 Fax : +65 622 789 42  
 E-mail : salesap@elecon.com

## radicon

### AUSTRALIA

Radicon Transmission  
 ( Australia) Pty. Ltd.  
 Tel: +61 488 054 028  
 Fax: +61 295 213 522  
 salesap@elecon.com  
 www.radicon.com

### UNITED KINGDOM

Radicon Transmission UK LTD.  
 Tel: +44 (0)1484 465800  
 Fax: +44 (0)1484 465801  
 sales@radicon.com  
 www.radicon.com

### THAILAND

Radicon Transmission Thailand Ltd.  
 Tel : +66 38 459 044  
 Fax: +66 38 213 655  
 salesap@elecon.com  
 www.radicon.com

### UNITED STATES OF AMERICA

RADICON USA  
 Tel. 1-847-593-9910  
 Fax. :1-847-593-9950  
 salesusa@radicon.com  
 www.radicon.com

### MIDDLE EAST

Radicon Transmission FZE  
 Tel: + 97165527950  
 Fax: + 97165527951  
 radicon@eim.ae  
 www.radicon.com

## benzlers

### DENMARK

Benzler Transmission A/S  
 Tel: +45 36 34 0300  
 info@benzlers.com  
 www.benzlers.com

### FINLAND

O.Y. Benzler AB  
 Tel: +358 9 340 1716  
 Fax: +358 10 296 2072  
 info@benzlers.com  
 www.benzlers.com

### GERMANY

Benzler Antriebstechnik  
 GmbH  
 Tel: +49 0800 350 4000  
 Fax: +49 0800 350 4001  
 mail@benzlers.com  
 www.benzlers.com

### NETHERLANDS

Benzler-TBA BV  
 Tel : +31 077 324 5900  
 Fax: +31 077 324 5901  
 mail@benzlers.com  
 www.benzlers.com

### SWEDEN

AB Benzlers  
 Tel: + 46 42 18 68 00  
 Fax: + 46 42 21 88 03  
 info@benzlers.com  
 www.benzlers.com

